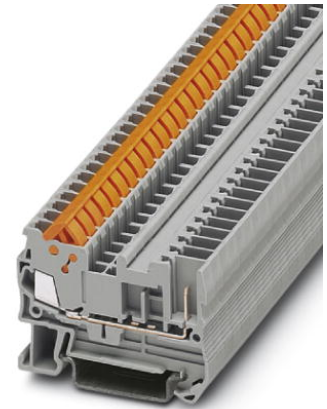


QTC 1,5/ 1P

Order No.: 3050073

<http://eshop.phoenixcontact.de/phoenix/treeViewClick.do?UID=3050073>

Pluggable quick connection terminal block for mounting on NS 35,
cross section: 0.25 - 1.5 mm², width: 5.2 mm, color: Gray

Commercial data

EAN	4017918975784
Pack	50 Pcs.
Customs tariff	85369010
Weight/Piece	0.00709 KG
Catalog page information	Page 218 (CL-2007)

Product notes

WEEE/RoHS-compliant since:
01/01/2003



<http://www.download.phoenixcontact.com>
Please note that the data given here has been taken from the online catalog. For comprehensive information and data, please refer to the user documentation. The General Terms and Conditions of Use apply to Internet downloads.

Technical data**General**

Number of levels	1
Number of connections	2
Color	gray
Insulating material	PA
Inflammability class acc. to UL 94	V0

Dimensions

Width	5.2 mm
Length	53.5 mm
Height NS 35/7,5	39.3 mm
Height NS 35/15	46.8 mm

Technical data

Maximum load current	17.5 A (with 1.5 mm ² conductor cross section)
Rated surge voltage	6 kV
Pollution degree	3
Surge voltage category	III
Insulating material group	I
Connection in acc. with standard	IEC 61 984
Nominal current I _N	17.5 A
Nominal voltage U _N	500 V
Open side panel	ja

Connection data

Conductor cross section solid min.	0.25 mm ²
Conductor cross section solid max.	1.5 mm ²
Conductor cross section stranded min.	0.25 mm ²
Conductor cross section stranded max.	1.5 mm ²
Conductor cross section AWG/kcmil min.	24
Conductor cross section AWG/kcmil max	16
Type of connection	Quick connection

Certificates / Approvals

Approval logo

**CUL**

Nominal voltage U _N	600 V
Nominal current I _N	10 A
AWG/kcmil	24-16

UL

Nominal voltage U_N	600 V
Nominal current I_N	10 A
AWG/kcmil	24-16
Certification	CUL, UL

Accessories

Item	Designation	Description
Assembly		
3206209	ATP-QTC	Partition plate, for visual and electrical separation of terminal groups, width: 2 mm, color: gray
3206322	D-QTC 1,5/1P	Cover for the feed-through terminal block QTC 1,5/1P and QTC 1,5/1P-PE, color: Gray
3038943	RB ST (2,5/4)-1,5	Reducing bridge, for connecting ST-2,5 or ST-4 spring-cage terminal blocks, with ST-1,5 or QTC 1,5 terminal block

Bridges

3030161	FBS 2-5	Plug-in bridge for cross-connections in the terminal center, 2-pos., color: Red
3030174	FBS 3-5	Plug-in bridge for cross-connections in the terminal center, 3-pos., color: Red
3030187	FBS 4-5	Plug-in bridge for cross-connections in the terminal center, 4-pos., color: Red
3030190	FBS 5-5	Plug-in bridge for cross-connections in the terminal center, 5-pos., color: Red
3030213	FBS 10-5	Plug-in bridge for cross-connections in the terminal center, 10-pos., color: Red
3030226	FBS 20-5	Plug-in bridge for cross-connections in the terminal center, 20-pos., color: Red
3038930	FBS 50-5	Plug-in bridge for cross-connections in the terminal center, 50-pos., color: Red

Marking

3040588	PC	Coding for all basic terminal blocks
1050004	ZB 5 :UNBEDRUCKT	Zack strip, unprinted, 10-section, for individual labeling with M-PEN, ZB-T or CMS system, pack is sufficient for 100 terminal blocks, for a terminal width of 5.2 mm, color: White

Plug/Adapter

3030925	PAI-4	Test adapter, for 4 mm diameter test plug PS and safety test plug, makes contact in the bridge shaft
---------	-------	--

3036709	PS-4/E	Individual test plug, for ST and QT terminal blocks, can be labeled with ZBFM 4
3030983	PS-5	Modular test plug, for individual assembly of test plug strips, for UT, ST, DT and QT terminal blocks, can be labeled with ZBF 5, color: Red

Tools

1204517	SZF 1-0,6X3,5	Screwdriver, blade: 0.6 x 3.5 x 100 mm, length 180 mm
---------	---------------	---

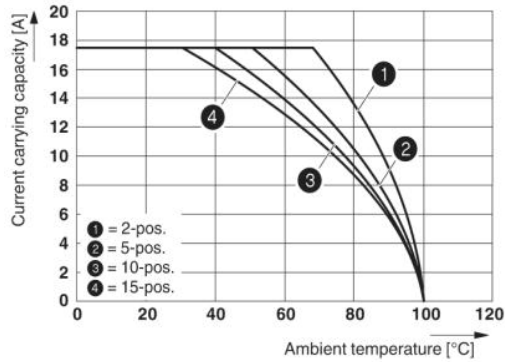
Additional products

Item	Designation	Description
Plug/Adapter		
3040258	SP 2,5/ 1	ST-COMBI connector, not bridgeable
3040698	SP 2,5/ 1 BU	ST-COMBI connector, not bridgeable
3040708	SP 2,5/ 1 GNYE	ST-COMBI connector, not bridgeable
3040261	SP 2,5/ 2	ST-COMBI connector, not bridgeable
3040274	SP 2,5/ 3	ST-COMBI connector, not bridgeable
3040287	SP 2,5/ 4	ST-COMBI connector, not bridgeable
3040290	SP 2,5/ 5	ST-COMBI connector, not bridgeable
3040300	SP 2,5/ 6	ST-COMBI connector, not bridgeable
3040313	SP 2,5/ 7	ST-COMBI connector, not bridgeable
3040326	SP 2,5/ 8	ST-COMBI connector, not bridgeable
3040339	SP 2,5/ 9	ST-COMBI connector, not bridgeable
3040342	SP 2,5/10	ST-COMBI connector, not bridgeable
3040355	SP 2,5/11	ST-COMBI connector, not bridgeable
3040368	SP 2,5/12	ST-COMBI connector, not bridgeable
3040371	SP 2,5/13	ST-COMBI connector, not bridgeable
3040384	SP 2,5/14	ST-COMBI connector, not bridgeable
3040397	SP 2,5/15	ST-COMBI connector, not bridgeable
3040106	SPB 2,5/ 1	ST-COMBI connector, bridgeable
3040724	SPB 2,5/ 1 BU	ST-COMBI connector, bridgeable
3040711	SPB 2,5/ 1 GNYE	ST-COMBI connector, bridgeable
3040119	SPB 2,5/ 2	ST-COMBI connector, bridgeable
3040122	SPB 2,5/ 3	ST-COMBI connector, bridgeable
3040135	SPB 2,5/ 4	ST-COMBI connector, bridgeable
3040143	SPB 2,5/ 5	ST-COMBI connector, bridgeable

3040151	SPB 2,5/ 6	ST-COMBI connector, bridgeable
3040164	SPB 2,5/ 7	ST-COMBI connector, bridgeable
3040177	SPB 2,5/ 8	ST-COMBI connector, bridgeable
3040180	SPB 2,5/ 9	ST-COMBI connector, bridgeable
3040193	SPB 2,5/10	ST-COMBI connector, bridgeable
3040203	SPB 2,5/11	ST-COMBI connector, bridgeable
3040216	SPB 2,5/12	ST-COMBI connector, bridgeable
3040229	SPB 2,5/13	ST-COMBI connector, bridgeable
3040232	SPB 2,5/14	ST-COMBI connector, bridgeable
3040245	SPB 2,5/15	ST-COMBI connector, bridgeable
3040407	SPDB 2,5/ 1	ST-COMBI connector, double, bridgeable
3040737	SPDB 2,5/ 1 BU	ST-COMBI connector, double, bridgeable
3040740	SPDB 2,5/ 1 GNYE	ST-COMBI connector, double, bridgeable
3040410	SPDB 2,5/ 2	ST-COMBI connector, double, bridgeable
3040423	SPDB 2,5/ 3	ST-COMBI connector, double, bridgeable
3040436	SPDB 2,5/ 4	ST-COMBI connector, double, bridgeable
3040449	SPDB 2,5/ 5	ST-COMBI connector, double, bridgeable
3040452	SPDB 2,5/ 6	ST-COMBI connector, double, bridgeable
3040465	SPDB 2,5/ 7	ST-COMBI connector, double, bridgeable
3040478	SPDB 2,5/ 8	ST-COMBI connector, double, bridgeable
3040481	SPDB 2,5/ 9	ST-COMBI connector, double, bridgeable
3040494	SPDB 2,5/10	ST-COMBI connector, double, bridgeable
3040504	SPDB 2,5/11	ST-COMBI connector, double, bridgeable
3040517	SPDB 2,5/12	ST-COMBI connector, double, bridgeable
3040520	SPDB 2,5/13	ST-COMBI connector, double, bridgeable
3040533	SPDB 2,5/14	ST-COMBI connector, double, bridgeable
3040546	SPDB 2,5/15	ST-COMBI connector, double, bridgeable

Drawings

Diagram



The figure shows the derating curve of the QTC 1,5/ 1P... terminal block in connection with the QP 1,5 connector

Dimensioned drawing

